

EQUIP. TYPE *R390A/URR* EXP. NO.

COL-5407589-002

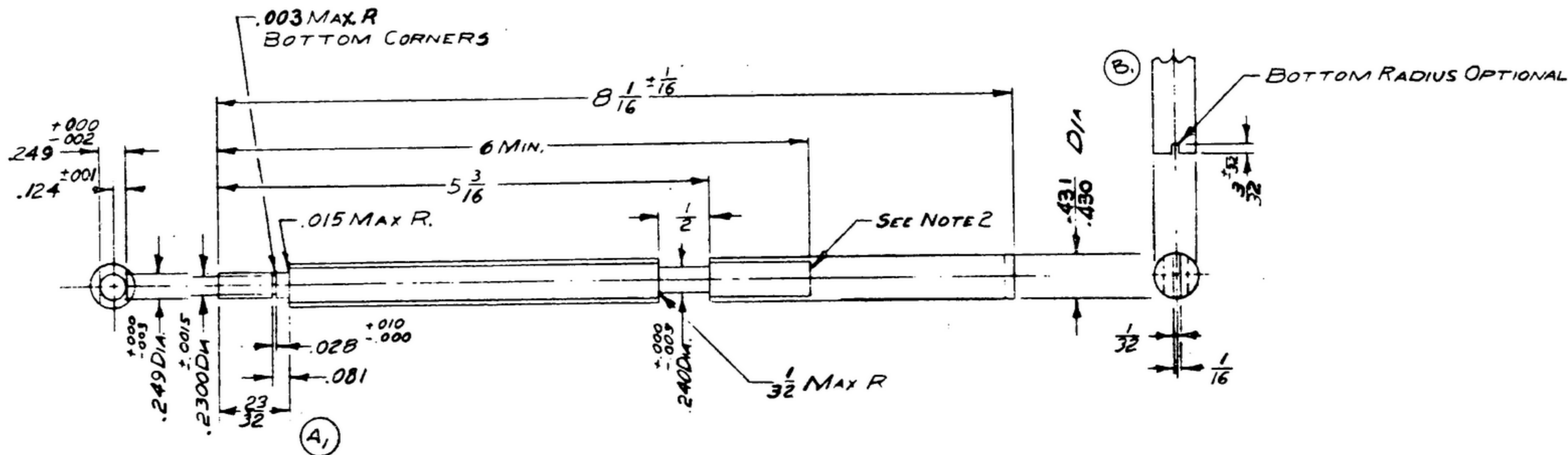
UNLESS GOVERNMENT DRAWINGS SPECIFICATIONS OR OTHER DATA ARE USED FOR ANY PURPOSE OTHER THAN IN CONNECTION WITH A SPECIFIC GOVERNMENT CONTRACT, THE UNITED STATES GOVERNMENT HEREBY DISCLAIMS ANY RESPONSIBILITY FOR ANY DELAY OR DAMAGE TO THE CONTRACTOR'S BUSINESS OR OTHER INTERESTS THAT MAY BE CAUSED BY THE GOVERNMENT'S USE OF THIS DRAWING FOR ANY PURPOSE OTHER THAN THAT AUTHORIZED BY THE GOVERNMENT. THIS DRAWING IS THE PROPERTY OF THE GOVERNMENT AND IS LOANED TO THE CONTRACTOR FOR HIS USE ONLY. IT IS TO BE RETURNED TO THE GOVERNMENT AT THE END OF THE CONTRACT OR AT THE END OF THE PERIOD OF EXTENSION OF CONTRACT AND IS NOT TO BE REPRODUCED, COPIED, OR OTHERWISE USED IN ANY MANNER WITHOUT THE WRITTEN PERMISSION OF THE GOVERNMENT. THE CONTRACTOR SHALL BE RESPONSIBLE FOR OBTAINING ALL NECESSARY PATENT RIGHTS AND RIGHTS OF INVENTION THAT MAY BE NECESSARY TO MANUFACTURE OR USE OF ANY PATENTED INVENTION THAT MAY IN ANY WAY BE RELATED HERETO.

THIS DRAWING HAS BEEN PURCHASED BY THE GOVERNMENT AND MAY BE REPRODUCED AND USED IN CONNECTION WITH ANY GOVERNMENT CONTRACT OR MAINTENANCE OPERATION.

FOR INFORMATION ONLY. CONTRACTOR MAY AT HIS OPTION DEVIATE FROM THESE PROCESS DETAILS.

*SWS APPROVAL
SYM *PR10078-B*

REVISIONS			
SYM	DESCRIPTION	DATE	APPROVAL
A ₁	A ₁ - 2024 WAS 24S	27 OCT 59	42428-PC-59-A1-51 REV'D. P.M.E.
B	B ₁ - $\frac{.431}{.430}$ WAS .4375 ± .0020	26 MAY 66	6-00189 REV'D. P.M.E.



ALUMINUM ALLOY 2024, TEMPER T4, PER SPEC QQ-A-268.

FINISH: E513 PER SPEC MIL-F-14072.

*COLLINS 580-0036-00

NOTES:

1. CENTER DRILLED ENDS OPTIONAL.
2. EDGE MAY TAKE FORM NECESSARY FOR FABRICATION.
3. CUT OFF BURR PERMISSABLE.
4. NO RELATION BETWEEN SLOT & FLATS.

COLLINS PART NO.	ITEM	QTY	ASSEMBLY	PART NO.	DESCRIPTION	DATE	DATE SPEC.
LIST OF MATERIAL							
COLLINS PART NO. <i>558-0376-003</i>							

DRAWN <i>Harner</i>			CHECKED <i>Blm</i>			APPROVED		
UNLESS OTHERWISE SPECIFIED: DECIMAL DIMENSIONS INCLUDING HOLE SIZES MAY VARY ± .003 FRACTIONAL DIMENSIONS INCLUDING HOLE SIZES MAY VARY ± .004 MACHINED ANGLES MAY VARY ± .25 BROKEN ANGLES MAY VARY ± .25 ECCENTRICITY BETWEEN ANY DIAMETERS ON THE SAME CENTERLINE SHALL NOT EXCEED .010 TOTAL INDICATOR READING. ALL DIMENSIONS ARE FINISH DIMENSIONS INCLUDING APPLIED FINISH AND ARE GIVEN IN INCHES.			COLLINS RADIO CO. 14214-PH-51-93			SHAFT-X TAL OSC.		
558-0376-003 / SM-D-249026 SC-DL-248775			SIGNAL CORPS					
COLLINS NO.			QTY			NEXT ASSY		
USED ON			APPROVED <i>PLY</i> <i>PME</i>			DATE <i>30 JAN 56</i> SCALE <i>1/1</i>		
APPLICATION			DEPARTMENT OF THE ARMY SIGNAL CORPS ENGINEERING LABORATORIES FORT MONMOUTH NEW JERSEY			SM-C-249026		